

# Water Hose Reel

Stainless Steel Reel for Kitchen/Restaurant

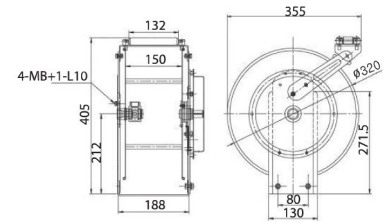
## Built-out Spring TWA-STS Type



For cold water

For Hot water

For Steam



### Features of cold water hose reel

We manufactured the hose and also it is only possible to be used by cold water. Especially, the hose material is non-toxic material. So it can be used for drinking. And the reel body material is consisted by stainless steel material. This product is highly durable for oil.

### Features of hot water hose reel

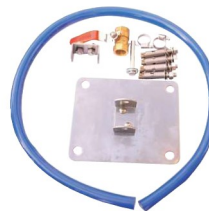
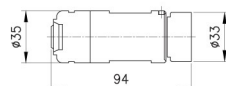
The hose is not hardened until +70°C. And regarding the outer hose material, it is durable material for oil. It is also can be used for drinking and the reel body material is consisted by stainless steel material. We can guarantee it as a manufacturer.

### Features of steam hose reel

This steam hose is imported product which is certified from FDA and Europe associations. Now it is using in the factories which are applying to drinking water, milk processing and steam even disinfection equipment. the working temperature is from -30°C to 160°C.



NBR nozzle (Optional)



### Accessories

(Hanger bracket, anchor bolt, Nut\*4EA, Connecting pin, Hose clamp\*2EA, Inlet hose 1.5m)



- French Quality Assurance Association certified products

Model	Hose			W.P (BAR)	Weight(kg)	Usage	Desc.
	Material	I,D-O,D(Ø)	L (M)				
TWA-1308	PVC	13	8	20	10	Drinking Cleaning	For cold water
TWA-1310	PVC	13	10	20	11		
TWA-1312	PVC	13	12	20	12		
TWA-1315	PVC	13	15	20	15		
TWA-1308W	PVC	13	8	20	11		
TWA-1310W	PVC	13	10	20	12	Drinking, Cleaning Less than 70°C	For hot water
TWA-1312W	PVC	13	12	20	13		
TWA-1315W	PVC	13	15	20	15		
TWA-1308SH	EPDM	13	8	10	15	Drinking, Cleaning, disinfection less than 160°C	For steam
TWA-1312SH	EPDM	13	12	10	18		
TWA-1315SH	EPDM	13	15	10	20		