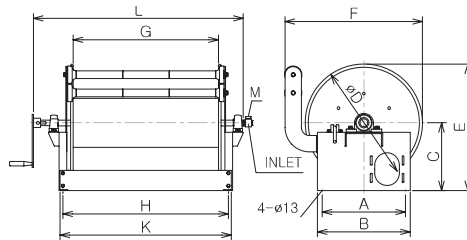


RM Type Manual Rewind

- Use : Large and medium sized service center, Industrial site
- Features : Solid frame, Manual rewind
- Installation : Fixed to the floor

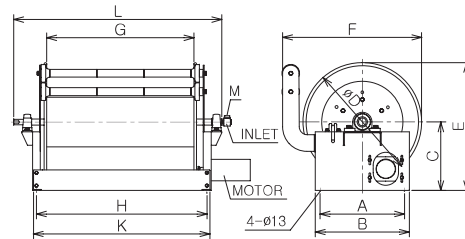
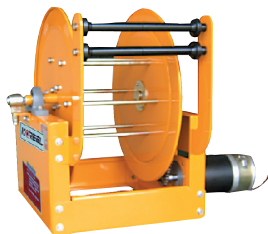
Model	Hose			W.P Max (kg/cm ²)	External Size										Weight (kg)
	Material	I,D (mm)	L (M)		A	B	C	D	E	F	G	H	K		
RM-1320	Synthetic Rubber	13	20	15	278	318	150	450	260	485	PT1/2"	150	420	17	
RM-1330	Synthetic Rubber	13	30	15	278	318	150	500	290	540	PT1/2"	150	420	20,4	
RM-1340	Synthetic Rubber	13	40	15	338	378	210	500	290	540	PT1/2"	200	480	23	
RM-1350	Synthetic Rubber	13	50	15	338	378	210	500	290	540	PT1/2"	200	480	27	
RM-1620	Synthetic Rubber	16	20	15	278	318	150	500	290	540	PT1/2"	150	420	20	
RM-1630	Synthetic Rubber	16	30	15	338	378	210	500	290	540	PT1/2"	200	480	25,2	
RM-1640	Synthetic Rubber	16	40	15	338	378	210	550	315	590	PT1/2"	200	480	32	
RM-1650	Synthetic Rubber	16	50	15	408	448	280	550	345	620	PT1/2"	200	550	40	
RM-1920	Synthetic Rubber	19	20	15	338	378	210	500	290	540	PT3/4"	200	480	26	
RM-1930	Synthetic Rubber	19	30	15	338	378	210	550	315	590	PT3/4"	200	480	34	
RM-1940	Synthetic Rubber	19	40	15	408	448	280	550	345	620	PT3/4"	150	550	41	
RM-2520	Synthetic Rubber	25	20	15	408	448	280	500	315	565	PT1"	200	550	30	
RM-2530	Synthetic Rubber	25	30	15	408	448	280	550	345	620	PT1"	200	550	36	



ASB Type Manual Rewind

- Use : Large and medium sized service center, Construction site, Industrial site, Specially-equipped vehicle
- Features : Solid frame, Permanent sealing, Manual rewind
- Installation : Floor, Vehicles

Model	Hose			W.P Max (kg/cm ²)	External Size											Weight (kg)
	Material	I,D (mm)	L (M)		A	B	C	D	E	F	G	H	K	L	M	
ASB-13100	Synthetic Rubber	13	100	15	430	480	325	550	600	660	500	605	635	840	PT1/2"	35
ASB-16100	Synthetic Rubber	16	100	15	430	480	350	600	650	710	600	720	750	940	PT1/2"	41
ASB-1950	Synthetic Rubber	19	50	15	430	480	325	550	600	660	500	605	635	840	PT3/4"	35
ASB-2550	Synthetic Rubber	25	50	15	430	480	350	600	650	710	600	720	750	940	PT1"	41



ASBM Type Motor Rewind

- Use : Large and medium sized service center, Construction site, Industrial site, Specially-equipped vehicle
- Features : Solid frame, Long-lasting sealing, Electric motor type (AC/DC)
- Installation : Floor, Vehicles

Model	Hose			W.P Max (kg/cm ²)	External Size											Weight (kg)	Voltage
	Material	I,D (mm)	L (M)		A	B	C	D	E	F	G	H	K	L	M		
ASBM-13200	Synthetic Rubber	13	200	15	430	480	350	600	650	710	650	770	800	960	PT1/2"	46	DC24V
ASBM-16100	Synthetic Rubber	16	100	15	430	480	350	600	650	710	600	720	750	910	PT1/2"	46	DC24V
ASBM-1950	Synthetic Rubber	19	50	15	430	480	325	550	600	600	600	720	750	910	PT3/4"	40	DC24V
ASBM-19100	Synthetic Rubber	19	100	15	430	480	350	600	650	710	650	770	800	960	PT3/4"	46	DC24V
ASBM-2550	Synthetic Rubber	25	50	15	430	480	350	600	650	710	600	720	750	910	PT1"	46	DC24V
ASBM-25100	Synthetic Rubber	25	100	15	430	480	380	650	705	760	750	870	900	1060	PT1"	53	DC24V